

Transformation of Indian Temple Towns: A Case Study of Nashik, Jejuri, Kolhapur, Tuljapur

Ashlesha kiran kale^{1*}

^{1*}*Barch, March(Urban Design) D.Y.Patil College of Architecture, Navi Mumbai.
Email ID: ashlesha.kale@gmail.com*

Abstract

This paper presents a transformative approach to developing Indian temple towns, focusing on Nashik, Jejuri, Kolhapur. Since a lot of pilgrims from different parts of Maharashtra visit these temple towns, so a need to connect and establish a route to improve tourism and connectivity with these temple towns becomes a necessity. We identify challenges, opportunities, and propose strategies for sustainable tourism, cultural heritage preservation, and community engagement.

This study explores the transformative development of Indian temple towns with a focus on Nashik, Jejuri, Kolhapur. These towns, which are significant cultural and economic hubs, face the challenge of balancing tourism with tradition while preserving cultural heritage and promoting sustainable development. Our research identifies key challenges and opportunities, proposing strategies for sustainable tourism, cultural heritage preservation, and community engagement.

Our hypothesis posts a dual approach to developing temple towns as religious and cultural tourist hubs, ensuring social sustainability and economic growth. This approach emphasizes the importance of development while conserving the past.

A mixed-methods approach, combining literature reviews and case studies to analyze these towns. Each town presents unique challenges and opportunities that contribute to our understanding of temple town development.

Keywords: *Indian temple towns, urban transformation, sustainable tourism, cultural heritage preservation, community participation, infrastructure development, constancy and change, "Cities Then and Now" framework, Nashik, Jejuri, Kolhapur, Tuljapur, heritage-led tourism, adaptive reuse, social sustainability, economic impact.*

Our analysis yielded several transformative strategies:

- *Implementing sustainable tourism practices that respect the cultural and environmental context of each town.*
- *Preserving cultural heritage through adaptive reuse of historic structures and promotion of intangible heritage.*
- *Engaging the community through participatory approaches that involve local stakeholders in decision-making processes.*
- *Developing and managing infrastructure to support both tourism and local needs, ensuring long-term sustainability and growth.*

Hypothesis:

Addition of temple in a town sudden changes the social sustainability and economic aspects of the town. Cities change over time. Transformation is the key to change wherein some landuses remain as constants while others change over time. So as per the theory of constancy and change we can analyse the 4 towns of Maharashtra Nashik, Jejuri, Kolhapur, Tuljapur from the lens of cities then and now.

Introduction

Indian temple towns are vital cultural and economic hubs, facing challenges in balancing tourism with tradition, preserving cultural heritage, and promoting sustainable development.

Methodology

This study employed a mixed-methods approach, combining literature reviews, case studies.

Case Studies

We examined four Indian temple towns: Nashik, Jejuri, Kolhapur, Tuljapur. Each town presents unique challenges and opportunities.

Transformation Strategies

Our analysis yielded the following transformative strategies:

1. Sustainable tourism practices
2. Cultural heritage preservation
3. Community engagement - public participatory approach
4. Infrastructure development and management.

Conclusion:

Transforming Indian temple towns requires a holistic approach balancing tourism, tradition, and sustainability. Our proposed strategies offer a starting point for policymakers, practitioners, and community stakeholders.

Recommendations

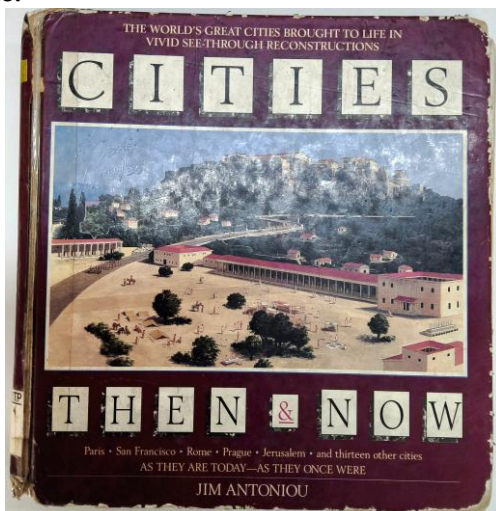
1. Implement sustainable tourism practices
2. Preserve cultural heritage through community-led initiatives
3. Foster community engagement and entrepreneurship development
4. Develop and manage infrastructure effectively

Ashlesha kiran kale, (2024), literature review of book " Cities Then and Now " by jim Antoniou

Literature review :

Summary

"Cities then and Now brings to life the past and present of Jerusalem,Rome,New York,Paris,and fourteen other great cities.Richly illustrated and packed with information,it provides fascinating insight into how cities are born and how they develop over time with interesting photographs which analyze TRANSFORMATION over time.



About the Author:**Jim Antoniou** is an architect and town planner with international experience in aspects of research and development.**The chairman of the Association of consultant planners in Great Britain,he has lectured at various universities in the United states and abroad.**

Each city features a major site as it looks at a key point in its history,printed on a transparent overlay and superimposed over a present day color photograph.

Each text traces the growth of each city,its buildings,urban life,services and social history,people and politics.

A wealth of accompanying pictures,drawings and maps illuminates each city.": jim Antoniou

Then cities are as beautifully designed as much as cities which are designed now,,,how would be the cities of future?????

Historical Context: This section would outline how urban design has evolved over time, addressing significant **historical events, movements, and theoretical developments** that have influenced city planning. For instance, the transition from **industrial-era cities to post-industrial urban environments** could be highlighted.

Theoretical Frameworks: Discuss the main theories of urban design presented in the book. This could include concepts like **New Urbanism, Smart Growth, or Landscape Urbanism**. The review might analyze how these theories address contemporary urban challenges compared to **historical practices**.

Case Studies: Examine specific case studies provided in the book that illustrate the transformation of cities. This could involve comparing cities that exemplify traditional urban design with modern examples that incorporate sustainable practices, technological advancements, and community-focused planning.

Social and Cultural Impacts: Explore how the book addresses the social changes that have influenced urban design, such as the rise of the automobile, suburbanization, and gentrification. This may include discussions on how urban design affects **community cohesion, accessibility, and inclusivity**.

Environmental Considerations: Investigate how the book discusses the growing importance of sustainability in **urban design practices today compared to the past**. This could involve analyzing the incorporation of green spaces, eco-friendly materials, and climate-responsive design.

Contemporary Challenges: Address contemporary challenges facing urban design, such as population growth, climate change, and technological advancements. The review may conclude with insights into how lessons from the past can inform future urban planning.

Western Cities:

New York: Often analyzed for its dense urban fabric and social diversity.

Paris: Frequently referenced for its historic urban planning and aesthetics.

London: Examined for its blend of historical and contemporary design.

Tokyo: Highlighted for its innovative approaches to space in a high-density environment.

Singapore: Showcased for its effective integration of green spaces and smart technology.

Beijing or Shanghai: Discussed for rapid urbanization and modernization.

Gap in literature" Cities Then and Now"

1. Empty Historical Contexts:

Underrepresented Voices: Many urban design texts focus on Western cities, potentially neglecting the voices and experiences from non-Western urban contexts. There might be limited discussion on how historical and cultural factors uniquely shape cities in places like India, Africa, and Latin America.

Temporal Depth: Some literature may not adequately address how historical context impacts current urban practices, failing to connect past urban challenges with present-day scenarios.

2. Cultural and Social Dimensions:

Cultural Variations: A gap may exist in examining how cultural practices influence urban design uniquely in different regions. Many works may overlook the significance of localized cultural practices, rituals, and community structures in urban planning.

Equity and Accessibility: Frequently, the literature does not adequately explore how urban design promotes or mitigates social inequalities, particularly for marginalized communities.

3. Environmental Considerations:

Sustainability Practices: There may be a lack of focus on sustainable urban practices, especially how past urban designs inform current environmental challenges such as climate change, pollution, and resource management.

Resilience and Adaptability: Works often do not sufficiently investigate how cities adapt to environmental changes over time, particularly in relation to disaster resilience and urban ecology.

4. Integration of Technology:

Digital Influence: As urban areas rapidly integrate technology, there could be insufficient examination of how digital spaces and smart technologies reshape urban experiences and planning, particularly in contrasting traditional spaces with modern tech-infused environments.

5. Public Participation: Limited discourse around how digital tools can enhance community engagement in urban planning processes.

6. Impact of Globalization:

Global Interconnections: Some literature may not sufficiently address how globalization reshapes local urban identities, economies, and the built environment, especially in traditional cities experiencing rapid transformation.

Transitional Dynamics: Gaps might exist in understanding the transitional dynamics between traditional and modern urban forms, particularly in cities undergoing significant globalization pressures.

6. Case Studies:

Indian cities not included in examples.

Regional Diversity: There could be a lack of diverse case studies that represent a range of urban

environments (like temple cities discussed earlier) and their unique challenges and transformations.

Comparative Analysis: Limited comparative studies that juxtapose urban design strategies in similar climates, cultures, or socio-economic conditions, providing a more comprehensive understanding of diverse urban practices.

7. Future Trajectories:

Long-term Projections: Many texts may not engage with predictive analysis regarding future urbanization trends, potential crises, or the evolving nature of public spaces in the face of changing demographics and societal values.

8. Intersectionality:

Multifaceted Issues: The intersection of various urban challenges—such as race, class, gender, and ability—in urban design may not be explored in depth, resulting in a lack of holistic understanding.

Conclusion: Identifying these gaps highlights opportunities for fresh research, theoretical development, or practical implementation in urban design. Scholars and practitioners can delve deeper into underexplored areas to contribute to a more nuanced understanding of how urban environments evolve and the diverse factors that shape them.

Studying in the Indian Context ,To study cities through the lens of cities then and now ,discussing these cities, consider the following approaches:

Nashik, Maharashtra

Famous for: The Panchavati area has several temples, including **the Trimbakeshwar Shiva Temple and the Goraram temple.**

Temple architecture: Local style with a mix of Hindu and Buddhist influences.

Historical significance: Nashik has been an important center of Hindu pilgrimage for centuries, with many temples dedicated to Shiva and other deities.

Urban development: Nashik is a bustling city with a mix of modern and ancient architecture.

Jejuri, Maharashtra

Famous for: **The Bhavani Shankar Temple**, a significant pilgrimage site for devotees of Lord Bhavani Shankar.

Temple architecture: Local style with ornate carvings and intricate stone work.

Historical significance: Jejuri has been an important center of Hindu pilgrimage for centuries, with many temples dedicated to various deities.

Urban development: Jejuri is a small town with a mix of ancient and modern architecture.



Jejuri

Historical Significance: Jejuri is famous for the **Khandoba Temple**, a significant pilgrimage site in Maharashtra. The temple is dedicated to **Lord Khandoba**, a form of Shiva³.

Then: Jejuri was a small town centered around the Khandoba Temple, with traditional rituals and festivals.

Now: The town has developed with better infrastructure to support the influx of pilgrims. The temple remains a central part of Jejuri's cultural and religious life³.

Jejuri, known for the Khandoba Temple, has a rich history and has undergone significant transformations over time. Here's an overview:

Historical Significance

Ancient Times: Jejuri has been an important pilgrimage site for centuries, dedicated to Lord Khandoba, a form of Shiva. The temple is situated on a hill and is a major center of worship, attracting devotees from various parts of Maharashtra¹.

Colonial Era: During the British period, Jejuri continued to be a significant religious site. The town saw some infrastructural developments, but the focus remained on the temple and its rituals¹.

Architectural Evolution: jejuri

Then: The Khandoba Temple was originally built with traditional architectural styles, featuring intricate carvings and stone work. The temple complex was surrounded by a small town with narrow pathways leading up to the hill².

Now: The temple has undergone several renovations and expansions to accommodate the growing number of pilgrims. Modern amenities have been added to enhance the visitor experience, while efforts have been made to preserve the traditional architecture².

Urban Development

Jejuri

Then: Jejuri was primarily a small town centered around the temple, with limited infrastructure and basic amenities.

Now: The town has developed significantly, with better roads, accommodation facilities, and other infrastructure to support the influx of pilgrims. The local economy has also benefited from the increased

tourism².

Cultural Significance

Then: The temple rituals and festivals, especially the Bhandara Festival, have always been central to Jejuri's cultural life. The town is known for its vibrant celebrations and the use of turmeric powder during festivals².

Now: While traditional rituals continue to play a significant role, Jejuri has also embraced modern cultural elements. The town has become a blend of ancient traditions and contemporary lifestyle, attracting both pilgrims and tourists².

Kolhapur, Maharashtra

Famous for: **The Mahalaxmi Temple**, one of the most important pilgrimage sites in Maharashtra.

Temple architecture: Local style with a mix of Hindu and Buddhist influences.

Historical significance: Kolhapur has been an important center of Hindu pilgrimage for centuries, with many temples dedicated to various deities.

Urban development: Kolhapur is a city with a mix of modern and ancient architecture.

Similarities:

All four cities have a rich temple heritage and are important centers of Hindu pilgrimage.

Many of the temples in each city have been built over several centuries and reflect local architectural styles.

Each city has a mix of ancient and modern architecture.

Nashik

Historical Significance: Nashik is one of the holiest cities in Hinduism, known for its association with the epic Ramayana. It is also a major site for the Kumbh Mela, held every 12 years.

Then: The city was a small pilgrimage center with temples like **Trimbakeshwar and the Kalaram Temple**.

Now: Nashik has grown into a bustling city, known as the **"Wine Capital of India"** due to its extensive vineyards. It has a mix of ancient temples and modern infrastructure².

Kolhapur

Historical Significance: Kolhapur is known for the **Mahalaxmi Temple**, dedicated to the goddess Mahalaxmi. The city has a rich history, being an important center for the Maratha Empire⁴.

Then: Kolhapur was a significant religious and cultural hub with the Mahalaxmi Temple as its focal point.

Now: Kolhapur has evolved into a modern city with a blend of historical sites and contemporary amenities. It is also famous for its Kolhapuri

chappals and spicy cuisine⁴.

Kolhapur's transformation.

Kolhapur, known for its rich cultural heritage and the famous Mahalaxmi Temple, has undergone significant transformations over the centuries. Here's an overview:

Historical Significance

Ancient Times: Kolhapur has been an important center since ancient times, with references in Hindu mythology and early historical records. It was a significant site during the rule of the Shilahara dynasty and later became a prominent city under the Maratha Empire¹.

Colonial Era: During British rule, Kolhapur was a princely state under the Bhosale Chhatrapati of the Maratha Confederacy. The city saw infrastructural developments, including the construction of the New Palace and other colonial-era buildings¹.

Architectural Evolution:Kolhapur

Then: The Mahalaxmi Temple, built in the 7th century, is a prime example of Hemadpanthi architecture. The temple complex was surrounded by traditional houses and narrow streets¹.

Now: The temple remains a central landmark, but the surrounding area has modernized significantly. The city now features a mix of ancient and contemporary architecture, with improved infrastructure to support tourism and local residents¹.

Urban Development:Kolhapur

Then: Kolhapur was primarily a religious and cultural hub with limited infrastructure.

Now: The city has developed into a major urban center with a population of over 500,000. It has become an important commercial and industrial hub in Maharashtra, known for its sugar processing, textiles, and engineering industries¹.

Cultural Significance

Then: The Mahalaxmi Temple has always been central to Kolhapur's cultural and religious life, hosting numerous festivals and rituals.

Now: While the temple continues to play a significant role, Kolhapur has also embraced modern cultural elements. The city is known for its vibrant festivals, educational institutions, and industrial growth¹.

kolhapur then and now

Kanchipuram

Kanchipuram has the largest number of temples among the four cities, with over 1000 temples.

Nashik's temple architecture is more influenced by Buddhism and Jainism than the other cities.

Jejuri's temple architecture is known for its intricate carvings and stone work.

Kolhapur's Mahalaxmi Temple is one of the most important temple complex.

Urban Development

Then: Kanchipuram was primarily a religious and educational hub with limited infrastructure.

Now: The city has developed into a more urbanized area with better roads, educational institutions, and other amenities. It is also renowned for its silk sarees, which are a significant part of its economy².

Let's explore the transformations of Kanchipuram, Nashik, Jejuri, and Kolhapur over time:

Historical Significance: Known as the **"City of Thousand Temples,"** Kanchipuram has been a major center for Tamil culture, religion, and education since ancient times. It was the capital of the Pallava dynasty and later a significant site for the Chola and Vijayanagara empires¹.

Then: The city was primarily a religious and educational hub with numerous temples, including the famous **Kailasanathar Temple and Ekambareswarar Temple.**

Now: Kanchipuram has modernized while preserving its rich heritage. It is also renowned for its silk sarees, which are a significant part of its economy¹.

Kanchipuram, often referred to as the "City of Thousand Temples," has a rich history and has undergone significant transformations over the centuries. Here's an overview:

Historical Significance

Ancient Times: Kanchipuram has been a major center for Tamil culture, religion, and education since ancient times. It was the capital of the Pallava dynasty from the 6th century CE and later became a significant site for the Chola and Vijayanagara empires¹. The city was known for its well-laid-out roads, high fortifications, and prominent buildings, attracting visitors from around the world².

Colonial Era: During British rule, Kanchipuram continued to be an important religious and cultural hub. The city saw some infrastructural developments, but the focus remained on its temples and traditional industries¹.

Architectural Evolution

Then: The city is renowned for its Dravidian-style temples, such as the Kailasanathar Temple, Vaikunta Perumal Temple, and Ekambareswarar Temple. These temples are characterized by their pyramidal towers and intricate carvings¹.

Now: While the ancient temples remain central to Kanchipuram's identity, the city has modernized significantly. It now features a mix of ancient and contemporary architecture, with improved infrastructure to support tourism and local residents¹.

Cultural Significance

Then: The temples have always been central to Kanchipuram’s cultural and religious life, hosting numerous festivals and rituals.

Now: While traditional rituals continue to play a significant role, Kanchipuram has also embraced modern cultural elements. The city is known for its vibrant festivals, educational institutions, and thriving silk industry².

Kanchipuram: Then and Now

Then

Ancient Kanchipuram: A depiction of Kanchipuram in its early days, highlighting the prominent temples like Kailasanathar Temple and the traditional layout of the city.

Now

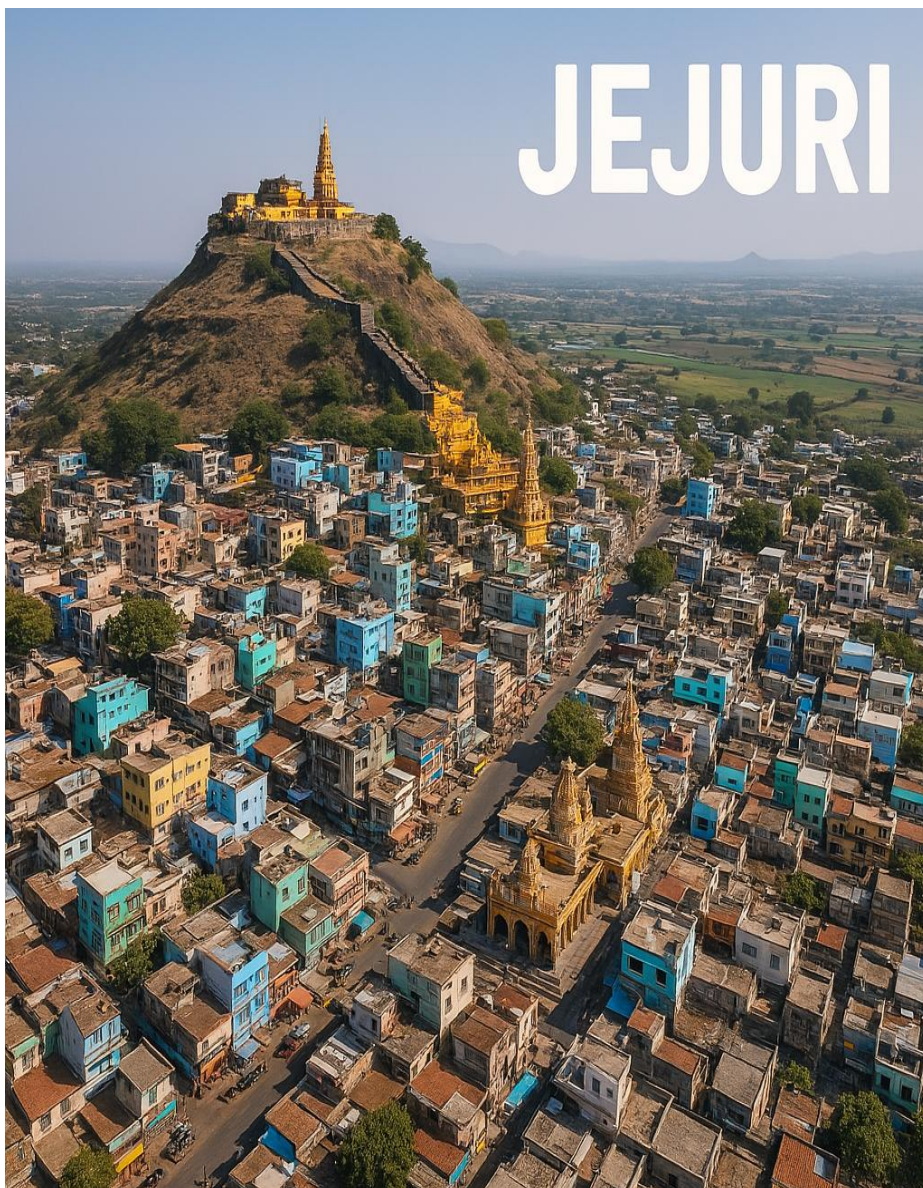
Modern Kanchipuram: The city today, showcasing the blend of ancient temples with modern

infrastructure and urban development.

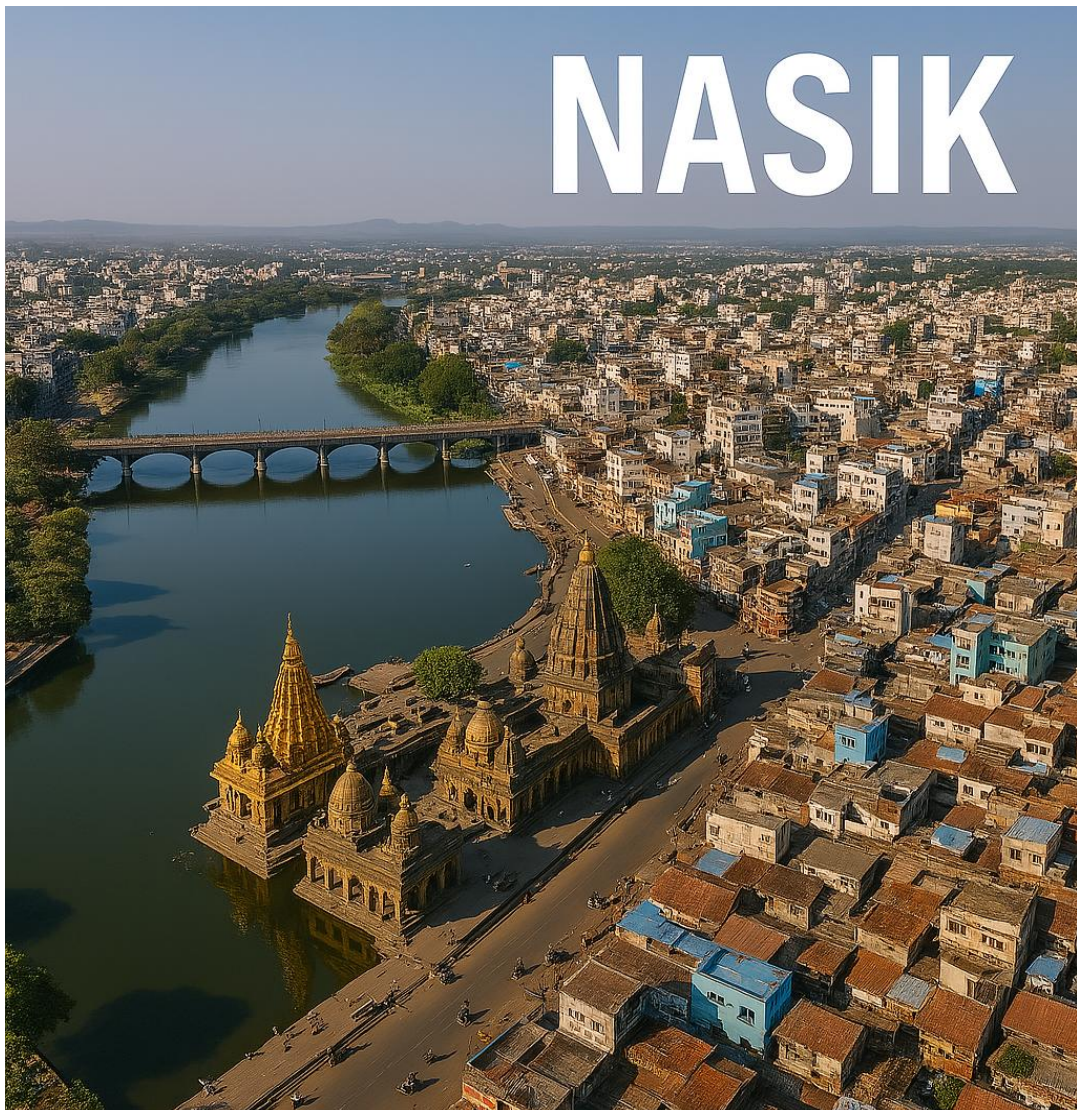
Conclusion :

References

1. Dovey, K. (1999). Framing places: Mediating power in built form. Routledge.
2. Jimenez, G. A. (2017). Cities then and now. Bookman Publishing.
3. Low, S. (2017). Spatializing culture: The ethnography of space and place. Routledge.
4. Moughtin, C. (2016). Urban design: Method and technique. Routledge.
5. Norberg-Schulz, C. (1980). Genius Loci: Towards a Phenomenology of Architecture. Rizzoli.
6. Email - ashlesha.kale@gmail.com
7. Conclusion :Future directions and suggestive transformations for temple towns.



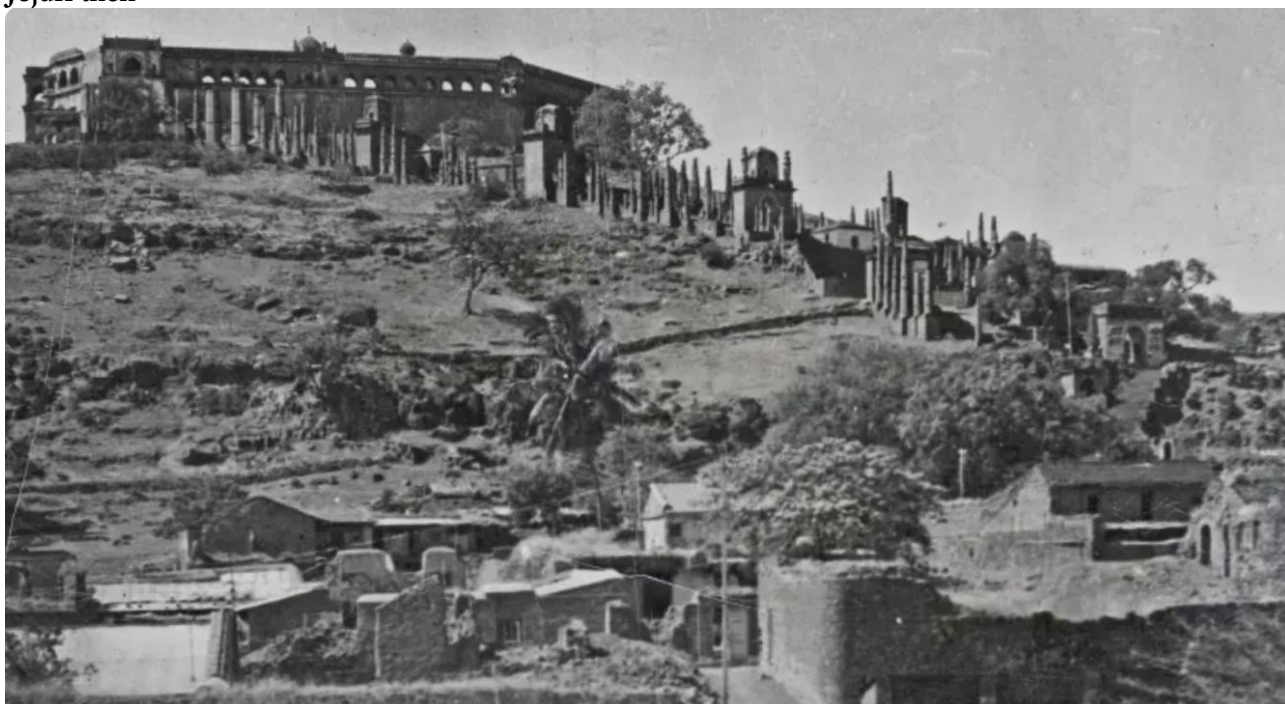
Jejuri future development





After analysing the transformation of temple towns such as Jejuri,Kolhapur,Nasik and Kanchipuram as per theory of then and now ,
Also for future transformations one can develop a master plan for the temple towns.
And through participatory planning approach implement the project through democratic approach where everyone participates in the planning process.
Funding can be organized by government.Temple trust ownership, Government land ownership and individual ownership would become important.

Jejuri then





Kolhapur temple



Then and now



Kolhapur future development model



